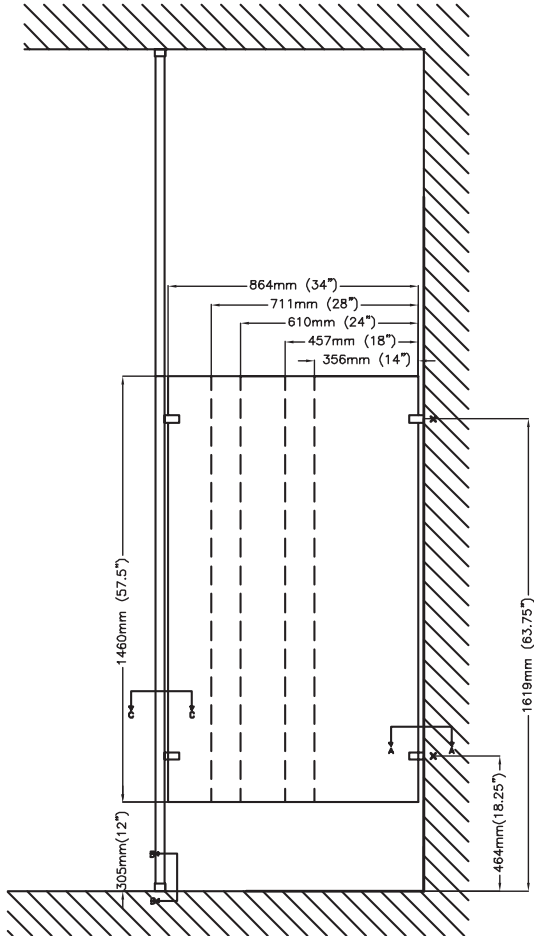




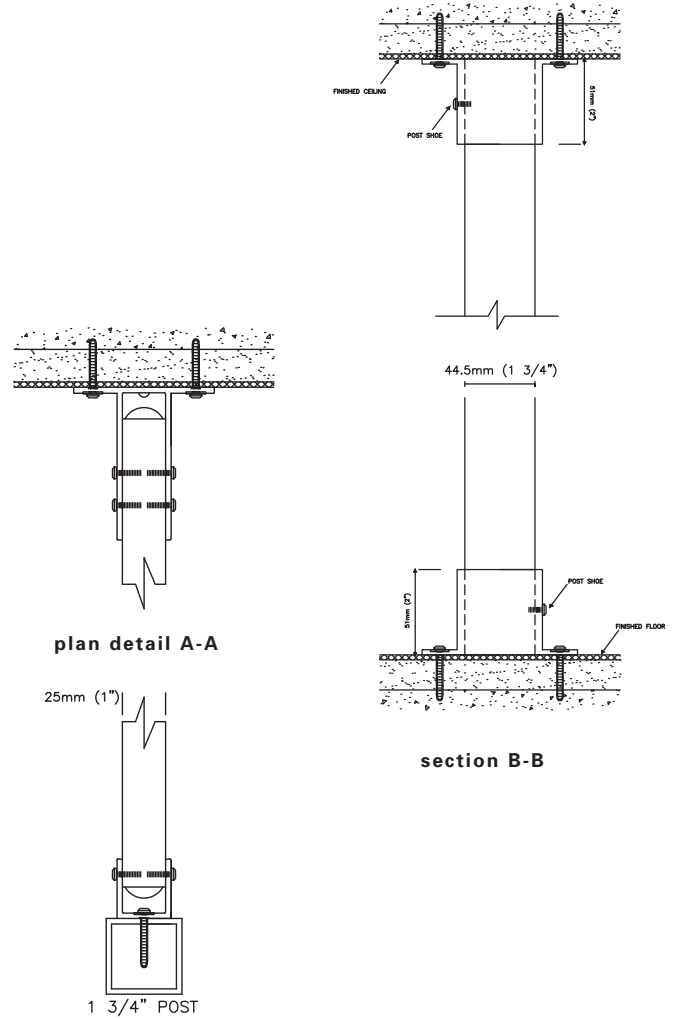
# METAL URINAL SCREENS - FLOOR TO CEILING MOUNTED WITH POST

## Standard



**Elevation**

Aluminum post is 3048mm (120") long and is to be cut on site to suit floor to ceiling dimension.



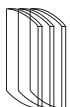
**plan detail A-A**

**section B-B**

**section detail C-C**

**Important Note:**

Refer to final drawings for wood blocking information. Wood blocking is critical to ensure a rigid installation.



**Hadrian Manufacturing Inc.,** 965 Syscon Road, Burlington, ON, Canada, L7L 5S3

**Hadrian Inc.,** 7420 Clover Avenue, Mentor, OH, U.S.A., 44060

[www.hadrian-inc.com](http://www.hadrian-inc.com)

• Tel: (905) 333-0300

• Tel: (440) 942-9118

• Fax: (905) 333-1841

• Fax: (440) 942-9618